

OUTLINE

Winetech operates as a network of participating institutions and individuals that, in one way or the other, have a strong interest in improving the competitive position of the South African wine industry. Winetech is an association and the members are the members of SALBA, VinPro and WCSA as well as other identified stakeholders.

Winetech's core functions are the facilitation and coordination of relevant wine industry related research and development as well as technical innovation, addressing the Winetech specific value chain and the effective transfer of such technology to the benefit of all.

The evaluation, identification and prioritising of research, training and transfer of technology are done by means of a committee system on an operational level. Specialist sub committees are appointed where necessary to execute tasks efficiently. Specialists on all subject fields of the wine industry contribute their expertise and time free of charge to make very important contributions.

Winetech addressed transformation in the statutory levy environment as requested by the NAMC. The statutory levy requires that at least 20 percent of funds should be spent on transformation; a goal that was easily achieved by Winetech. Technical training of farm and cellar workers was also a high priority.

Although Winetech's core business revolves around research, technological development, training and technology transfer, much time is spent on presentations and motivations to funders like DST, NAMC, WCDoA and the FoodBev SETA and AgriSETA. Discussions about research, training and technology with representatives of the ARC, universities, CIAT and to a lesser extend with the DoA and WCDoA are held continuously. Winetech also represents the wine industry on various WSB committees, OIV committees and work groups as well as the NARF, WIDA, SASEV and other industry bodies.

Winetech could fulfil all its financial obligations for 2010. The income from the 2010 R&D levy however, was R1,7m (8,5%) less than estimated. This placed some strain on Winetech's financial position to the extent that expenses had to be firmly controlled to make income and expenditure balance. This situation was further supported by additional income from FoodBev SETA.

TABLE OF CONTENTS

Page number

WINETECH ADVISORY COUNCIL MEMBERS

ABBREVIATIONS

1	STRUCTURE	1
2	PERSONNEL	1
3	MANAGEMENT	1
4	RESEARCH PROJECTS	2
5	RESEARCH, TECHNOLOGY TRANSFER AND TRAINING PROGRAMMES	9
5.1	Optimal Grape Composition Programme to reach specific wine objectives	9
5.2	Terroir Programme	11
5.3	Technology Transfer Programme	12
5.3.1	Technology Transfer: District Programme (Winetech/VinPro)	12
5.3.2	Vineyard Practice Evaluation Project (Winetech/VinPro)	14
5.3.3	Production Plan Project on farm level (Winetech/Vinpro)	15
5.3.4	Publications	15
5.3.4.1	<i>SASEV Journal</i>	15
5.3.4.2	<i>Technical Yearbook: Wynboer</i>	16
5.3.4.3	<i>Wynboer Tegnies (Technical)</i>	17
5.3.4.4	<i>Winetech News</i>	19
5.3.4.5	<i>Winetech Scan</i>	19
5.3.4.6	Website	20
5.3.4.7	Technology Transfer Database	20
5.4	Training Programme	21
5.4.1	Syllabus Development/Training Support/Professional services	21
5.4.2	Appropriation of Bursaries	21
5.4.3	South African Trilingual Online Wine Industry Dictionary	24
5.4.4	Technology Transfer Enabling Environment (Training of farm workers)	24
5.4.4.1	Robertson and Riebeek Viticulture Practices Skills Prog. on NQF Level 2	24
5.4.4.2	Wamakersvallei and Windmeul Viticulture Practices Skills Prog. on NQF Level 2	24
5.4.5	ARC: Gelukshoop Kleinboere Trust, Melkhoutsfontein and Eksteenskuil communities	25
5.4.6	Northern Cape/Free State Vineyard Development Company: The NAMC working group committee for the design of the vineyard development scheme	27
5.4.7	Learnerships National Certificate in Wine Processing NQF Level 3	27
5.4.8	Bursary for Accredited Training for Cellar Worker of the Year	28
5.4.9	Vineyard Worker Educational Visit to Robertson	28

5.4.10	Cellar worker Educational Programme	30
5.4.11	Scoping and development of learning material	30
5.4.12	Workshops	32
5.4.13	South African Wine Industry Cellar Worker Programme	32
6	REPRESENTATION ON BODIES	33
7	NATIONAL AGRICULTURAL MARKETING COUNCIL (NAMC)	34
8	INTERNATIONAL WINE OFFICE (OIV)	35
9	AGRICULTURAL RESEARCH COUNCIL (ARC)	36
10	TECHNOLOGY AND HUMAN RESOURCES FOR INDUSTRY PROGRAMME (THRIP)	36
11	NATIONAL AGRICULTURAL RESEARCH FORUM (NARF)	37
12	DEPARTMENT OF SCIENCE AND TECHNOLOGY (DST)	37
13	SOUTH AFRICAN REVENUE SERVICES (SARS)	37
14	WINETECH INCOME AND FUNDS GENERATED BASED ON WINETECH FUNDS	38
15	FINANCIAL STATEMENTS	40

WINETECH COUNCIL MEMBERS 2010

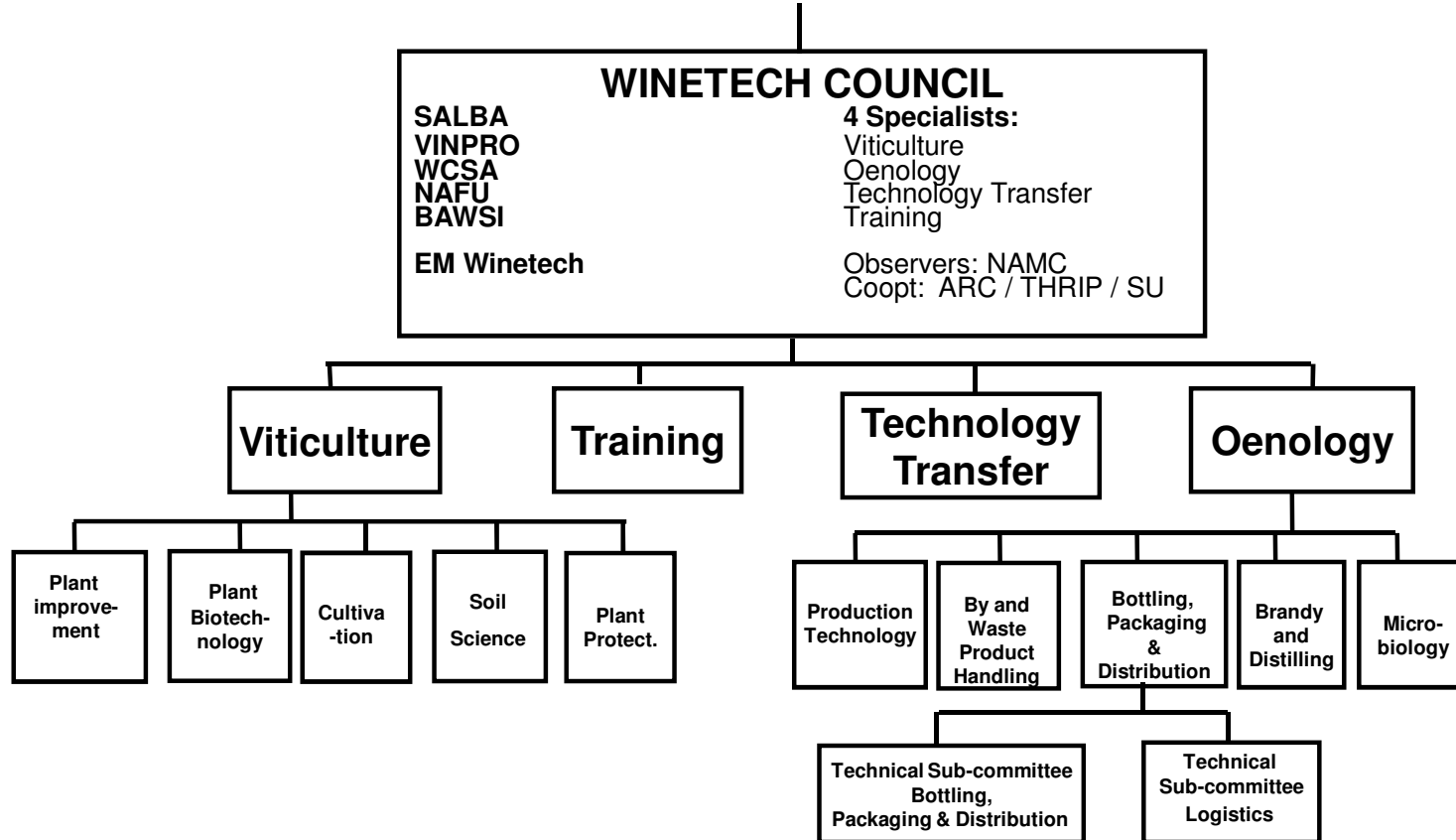
Mr EG le Roux	Chairperson, as well as Chairperson of the Viticulture Committee
Ms I Waller	Chairperson Oenology Committee
Mr CW Theron	Chairperson of the Training Committee
Mr G Martin	Chairperson of the Technology Transfer Committee
Prof. L van Huyssteen	SU and Vice-chairperson
Dr J van Zyl	ARC
Dr Z Dyosi	NRF (THRIP)
Mr D Marais	WCSA
Mr R Kruger	SALBA
Mr A Smuts	VinPro
Mr IG Davids	NAFU
Mr JH Booyesen	Executive Manager: Winetech

WINETECH MANAGEMENT

Mr JH Booyesen	Executive Manager
Ms A Andrag	Assistant Manager
Mr G Martin	Assistant Manager

WINETECH STRUCTURE

WINETECH



ABBREVIATIONS

ARC	Agricultural Research Council
BAWSI	Black Association of the Agricultural Sector
CEO	Chief Executive Officer
CEP	Community of Experts
CEWPA	Cape Estate Wine Producers` Association
CIAT	Cape Institute for Agricultural Training
CPUT	Cape Peninsula University of Technology
CST	Scientific & Technical Committee
DAFF	Department of Agriculture, Forestry and Fisheries
DG	Director General
DoA	Department of Agriculture
DST	Department of Science and Technology
DVO	Department of Viticulture and Oenology
ETQA	Education and Training Quality Assurer
IPW	Integrated Production of Wine
ISCW	Institute for Soil, Climate and Water
ISI	Institute for Scientific Information
ISOE	Institute of Sectoral and Occupational Excellence
IWBT	Institute for Wine Biotechnology
NAFU	National African Famers Union
NAMC	National Agricultural Marketing Council
NARF	National Agricultural Research Forum
NQF	National Qualifications Framework
NRF	National Research Foundation
OFO	Organising Framework for Occupations
OIV	International Wine Office
PAET	Provincial Agriculture Education and Training Forum
PPRI	Plant Protection Research Institute
QCTO	Quality Council on Trades and Occupations
R&D	Research and Development
SAJEV	South African Journal of Enology and Viticulture
SALBA	South African Liquor Brandowners Association
SANCID	South African National Committee for Irrigation and Drainage
SAQA	South African Qualifications Authority
SARS	South African Revenue Services
SASEV	South African Society for Enology and Viticulture
SAWIS	South African Wine Industry Information and Services
SETA	Sector Education and Training Authority
SU	Stellenbosch University
THRIP	Technology and Human Resource for Industry Programme
UCT	University of Cape Town
UP	University of Pretoria
UWC	University of the Western Cape
VinPro Coop Ltd	Cape Wine Producers Association

WCDoA	Western Cape Department of Agriculture
WCSA	Wine Cellars South Africa
WIDA	Wine Industry Development Association
WINETECH	Wine Industry Network of Expertise and Technology
WITTT	Wine Industry Training Task Team
WOSA	Wines of South Africa
WSB	Wine and Spirit Board