

## OUTLINE

Winetech operates as a network of participating institutions and individuals that, in one way or the other, have a strong interest in improving the competitive position of the South African wine industry. Winetech is an association and the members are the members of SALBA, VinPro and WCSA as well as other identified stakeholders.

Winetech's core functions are the facilitation and coordination of relevant wine industry related research and development as well as technical innovation, addressing the Winetech specific value chain and the effective transfer of such technology to the benefit of all.

The evaluation, identification and prioritising of research, training and transfer of technology are done by means of a committee system on an operational level. Specialist sub committees are appointed where necessary to execute tasks efficiently. Specialists on all subject fields of the wine industry contribute their expertise and time free of charge to make very important contributions.

Winetech addressed transformation in the statutory levy environment as requested by the NAMC. The statutory levy requires that at least 20 percent of funds should be spent on transformation; a goal that was easily achieved by Winetech. Technical training of farm and cellar workers was also a high priority.

Although Winetech's core business revolves around research, technological development, training and technology transfer, much time is spent on presentations and motivations to funders like DST, NAMC and the WCDoA. Discussions about research, training and technology with representatives of the ARC, universities, CIAT and to a lesser extend with the DoA and WCDoA are held continuously. Winetech also represents the wine industry on various WSB committees, OIV committees and work groups as well as the NARF and WIDA.

Winetech could fulfil all its financial obligations for 2009. The income from the 2009 R&D levy however, was R1,3m (7,2%) less than estimated. This placed some strain on Winetech's financial position to the extent that no new research projects could be accepted from the ARC for 2010.

## TABLE OF CONTENTS

	Page number
<b>WINETECH ADVISORY COUNCIL MEMBERS</b>	
<b>ABBREVIATIONS</b>	
<b>1 STRUCTURE</b>	<b>1</b>
<b>2 PERSONNEL</b>	<b>1</b>
<b>3 MANAGEMENT</b>	<b>1</b>
<b>4 RESEARCH PROJECTS</b>	<b>2</b>
<b>5 RESEARCH, TECHNOLOGY TRANSFER AND TRAINING PROGRAMMES</b>	<b>9</b>
<b>5.1 Vine Virus Programme</b>	<b>9</b>
<b>5.2 Optimal Grape Composition Programme to reach specific wine objectives</b>	<b>10</b>
<b>5.3 Terroir Programme</b>	<b>10</b>
<b>5.4 Biotechnology Programme</b>	<b>11</b>
<b>5.5 Technology Transfer Programme</b>	<b>11</b>
5.5.1 Technology Transfer: District Programme (Winetech/VinPro)	11
5.5.2 Vineyard Practice Evaluation Project (Winetech/VinPro)	13
5.5.3 Production Plan on farm level (Winetech/Vinpro)	16
5.5.4 Maintenance and application of the BFAB wine model in the wine industry	17
5.5.5 Task teams/Roadshows/Workshops	17
5.5.5.1 Bottling, Packaging and Distribution	17
5.5.5.2 Obtaining of international expertise	18
5.5.6 Publications	18
5.5.6.1 <i>SASEV Journal</i>	18
5.5.6.2 <i>Technical Yearbook: Wynboer</i>	19
5.5.6.3 <i>Wynboer Tegnies (Technical)</i>	20
5.5.6.4 <i>Winetech News</i>	21
5.5.6.5 <i>Winetech Scan</i>	21
5.5.6.6 Website	22
5.5.6.7 Technology Transfer Database	23
<b>5.6 Training Programme</b>	<b>23</b>
5.6.1 Curriculum Development/Training Support/Professional services	23
5.6.2 Appropriation of Bursaries	23
5.6.3 Trilingual Dictionary	24
5.6.4 Technology Transfer Enabling Environment (Training of farm workers)	24
5.6.4.1 Robertson and Riebeek Viticulture Practices Skills Prog. on NQF Level 1	24
5.6.5 ARC Farm Projects	26
5.6.5.1 Gelukshoop	26
5.6.5.2 Melkhoutsfontein	26

5.6.5.3	Eksteenskuil	27
5.6.5.4	Modular course in wine grape cultivation – Orange River	28
5.6.6	Northern Cape/Free State Vineyard Development Company	29
5.6.6.1	Action Plan	29
5.6.6.2	The NAMC working group committee for the design of the vineyard development scheme	29
5.6.7	Learnerships National Certificate in Wine Processing NQF Level 3	30
5.6.8	Bursary for Accredited Training for Cellar Worker of the Year	30
5.6.9	Cellar worker educational visit to Van Loveren	31
5.6.10	Vineyard Worker Educational Programme	31
5.6.11	Scoping and development of learning material	31
5.6.12	Educational Tours for Learners	32
5.6.13	Workshops	32
5.6.14	WCSA/Winotech Cellar Worker of the Year Competition	32
5.6.15	Certificate ceremony for farm workers in the Olifants River Valley	34
<b>6</b>	<b>REPRESENTATION ON BODIES</b>	<b>34</b>
<b>7</b>	<b>NATIONAL AGRICULTURAL MARKETING COUNCIL (NAMC)</b>	<b>35</b>
<b>8</b>	<b>INTERNATIONAL WINE OFFICE (OIV)</b>	<b>35</b>
<b>9</b>	<b>AGRICULTURAL RESEARCH COUNCIL (ARC)</b>	<b>35</b>
<b>10</b>	<b>TECHNOLOGY AND HUMAN RESOURCES FOR INDUSTRY PROGRAMME (THRIP)</b>	<b>36</b>
<b>11</b>	<b>NATIONAL AGRICULTURAL RESEARCH FORUM (NARF)</b>	<b>36</b>
<b>12</b>	<b>DEPARTMENT OF SCIENCE AND TECHNOLOGY (DST)</b>	<b>37</b>
<b>13</b>	<b>SOUTH AFRICAN REVENUE SERVICES (SARS)</b>	<b>37</b>
<b>14</b>	<b>CONFRONTING CLIMATE CHANGE</b>	<b>37</b>
<b>15</b>	<b>STRATEGIC SESSION</b>	<b>38</b>
<b>16</b>	<b>WINETECH INCOME AND FUNDS GENERATED BASED ON WINETECH FUNDS</b>	<b>38</b>
<b>17</b>	<b>FINANCIAL STATEMENTS</b>	<b>40</b>

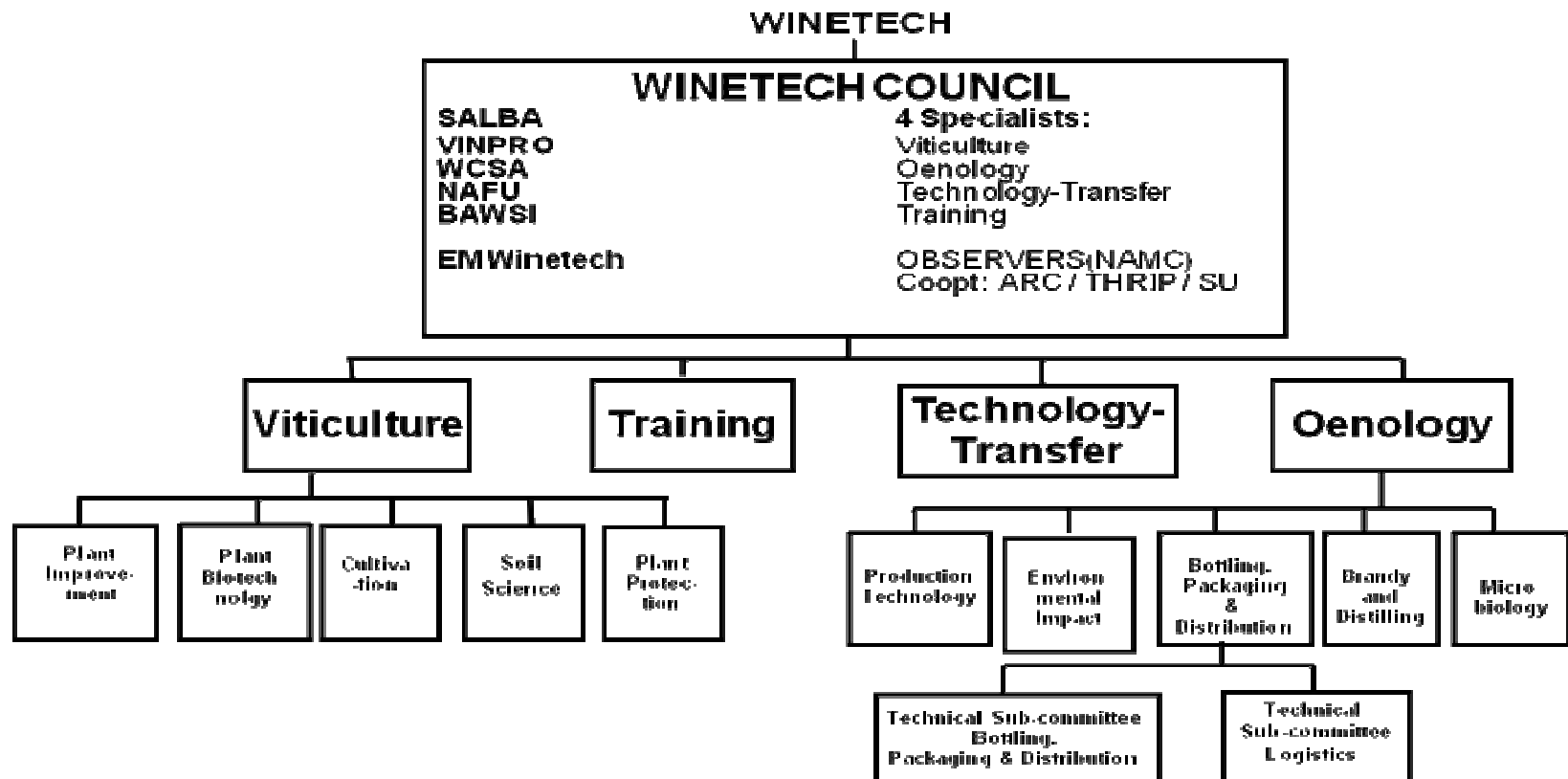
## WINETECH COUNCIL MEMBERS 2009

Mr EG le Roux	Chairperson, as well as Chairperson of the Viticulture Committee
Dr G Loubser	Chairperson Oenology Committee (Until June 2009)
Ms I Waller	Chairperson Oenology Committee (Since July 2009)
Mr CW Theron	Chairperson of the Training Committee
Mr G Martin	Chairperson of the Technology Transfer Committee
Prof L van Huyssteen	SU
Dr J van Zyl	ARC
Mr Z Dyosi	NRF (THRIP)
Mr D Marais	WCSA
Mr R Kruger	SALBA
Mr A Smuts	VinPro
Mr IG Davids	NAFU
Mr JH Booysen	Executive Manager: Winetech

## WINETECH MANAGEMENT

Mr JH Booysen	Executive Manager
Ms A Andrag	Assistant Manager
Mr G Martin	Assistant Manager

# WINETECH STRUCTURE



## ABBREVIATIONS

AGIS	Agricultural Geo-Referenced Information System
ARC	Agricultural Research Council
BAWSI	Black Association of the Agricultural Sector
BFAB	Bureau for Food and Agricultural Policy Research
BUSCO	Wine Industry Business Support Company
CEO	Chief Executive Officer
CEP	Community of Experts
CIAT	Cape Institute for Agricultural Training
CPUT	Cape Peninsula University of Technology
CST	Scientific & Technical Committee
CTICC	Cape Town International Convention Centre
DAFF	Department of Agriculture, Forestry and Fisheries
DBSA	Development Bank of South Africa
DoA	Department of Agriculture
DST	Department of Science and Technology
DVO	Department of Viticulture and Oenology
GM	Genetically Modified
GMO	Genetically Modified Organisms
IPW	Integrated Production of Wine
ISCW	Institute for Soil, Climate and Water
ISI	Institute for Scientific Information
IWBT	Institute for Wine Biotechnology
NAFU	National African Farmers Union
NAMC	National Agricultural Marketing Council
NARF	National Agricultural Research Forum
NQF	National Qualifications Framework
NRF	National Research Foundation
OABS	Optimal Agricultural Business Solutions
OFO	Organising Framework for Occupations
OIV	International Wine Office
PAET	Provincial Agriculture Education and Training Forum
PPRI	Plant Protection Research Institute
R&D	Research and Development
SAD	Safari Dried Fruits
SAJEV	South African Journal of Enology and Viticulture
SALBA	South African Liquor Brandowners Association
SANCID	South African National Committee for Irrigation and Drainage
SAQA	South African Qualifications Authority
SARS	South African Revenue Services
SASEV	South African Society for Enology and Viticulture
SAWIS	South African Wine Industry Information and Services
SETA	Sector Education and Training Authority
SU	Stellenbosch University
THRIP	Technology and Human Resource for Industry Programme

UCT	University of Cape Town
UF	Centre for Environmental Management
UP	University of Pretoria
UWC	University of the Western Cape
VinPro Coop Ltd	Cape Wine Producers Association
WCDoA	Western Cape Department of Agriculture
WCSA	Wine Cellars South Africa
WIDA	Wine Industry Development Association
WINETECH	Wine Industry Network of Expertise and Technology
WITTT	Wine Industry Training Task Team
WSB	Wine and Spirit Board